



Medical Training Survey

Interactive data dashboard – User guide

About the survey

The Medical Training Survey (MTS) is designed as a quality improvement tool, to strengthen post-graduate medical training in Australia. The survey covers a range of elements and these are reflected in the reports:

- Training curriculum
- Orientation
- Assessment
- Clinical supervision
- Access to teaching
- Facilities
- Workplace environment and culture
- Patient safety
- Overall satisfaction
- Future career intentions

Demographic and other profiling information has been collected so results can be filtered and compared.

Further information about the survey methodology is contained the national report, accessible on the [Reports and results](#) section of this website.

Interpretation/small sample sizes

In the 2019 survey, n=9,917 responses were received, with n=9,378 responses eligible for analysis (i.e. currently training in Australia). Of these, 7,693 doctors in training completed more than 75% of the survey questions.

A sample size of 7,693 gives a maximum margin of error ± 1.1 at a 95% confidence level for questions which were asked of all doctors in training. For some questions, the margin of error may be higher or lower, depending on the number of respondents to that question. A maximum margin of error ± 1.1 at a 95% confidence level means, for example, that if a survey result is 50%, we can be sure that if we repeat the survey multiple times, 95% of these times the survey result will be between 51.1% and 48.9%.

Survey data are unweighted.

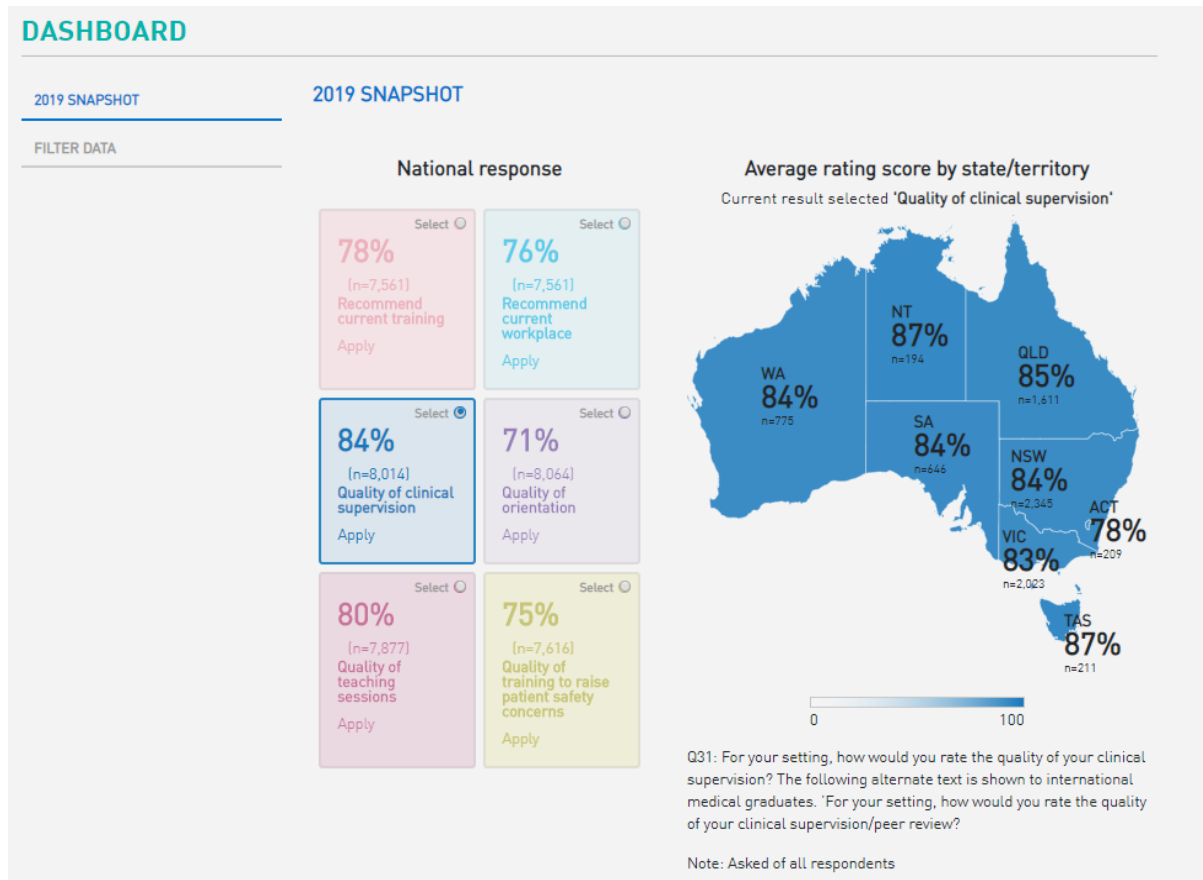
Please note that results are suppressed where the base size (the number of eligible respondents answering a question) is less than 10 – this is to preserve anonymity. Care should be taken in interpreting the data across groups where samples sizes are less than 30.

Purpose of the interactive data dashboard

The interactive data dashboard was designed so users can cut and view the data to reflect their particular interests. There are two parts to the dashboard; the overall 2019 snapshot, and the ability to tailor and create your own reports using the 2019 MTS results.

Dashboard

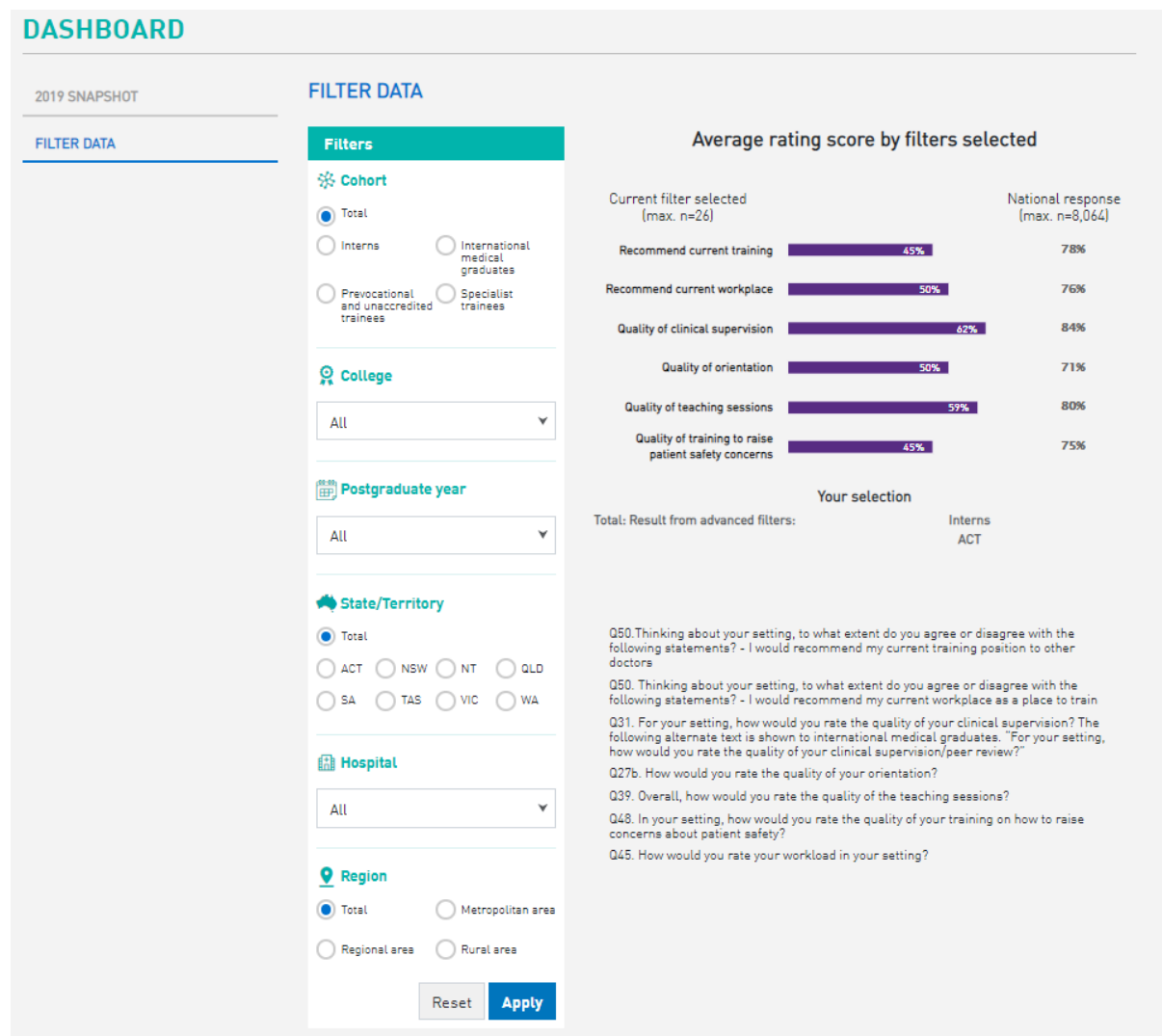
2019 Snapshot



The 2019 snapshot provides a high-level snapshot of the 2019 MTS results. In this instance, you can compare the state/territory to the national response by selecting one of the following survey questions:

1. Recommend current training
2. Recommend current workplace
3. Quality of clinical supervision
4. Quality of orientation
5. Quality of teaching sessions
6. Quality of training to raise patient safety concerns

Filter data



The filter data functionality enables you to compare responses from a cohort, postgraduate year, state/territory, hospital and/or region with the national response.

Select the required filter option then click *Apply* to display the results. Select up to one option in each filter category. The filters selected will be displayed below the chart produced.

Create your own report

To create your own report, select 'Create your own report' under the 'Results' menu.

Create a filtered report

Choose between a chart or table display

Select '+' symbol to expand to view filters

Check one or more options from drop-down lists

Select 'Apply' to update the report

Select '+' symbol to expand topics to view questions

Shows filtered base size

Shows previously applied filters

Category	Percentage
Yes, a formal orientation	50%
Yes, but it was largely informal	39%
No	19%

Your selection
Total: Result from advanced filters: Doctor in training cohort: Prevocational and unaccredited trainees
State/Territory: ACT

Example test cases using filtered report functionality

1. *Interns in Victoria* - chart format

To create this report using the filters:

Step 1: Select *chart* option in 'Display as' tab

Step 2: Select *interns* under the 'Doctor in training cohort' filter

Step 3: Select *VIC* under the 'State/Territory' filter

Step 4: Click on the 'Apply' button

2. *Specialist trainees who are PGY3* - table format

To create this report using the filters:

Step 1: Select *table* option in 'Display as' tab

Step 2: Select *Specialist trainees* in 'Doctor in training cohort' filter

Step 3: Select *PGY3* in 'Postgraduate Year' filter

Step 4: Click on 'Apply' button

Create a report with comparisons

Example test case using comparison functionality

1. *NSW specialist trainees* compared with *Victorian specialist trainees* compared to national response - table format

To create this report:

Step 1: Select the *table* option in the '*Display as*' tab

Step 2: Select *Specialist trainees* in the *0*section under the '*Doctor in training cohort*' filter

Step 3: Select *State/Territory* → *NSW* under the '*Comparison 1*' tab

Step 4: Select *State/Territory* → *Vic* under the '*Comparison 2*' tab

Step 5: Click on the '*Apply*' button

2. *Female trainees* compared with *male trainees* - chart format

To create this report:

Step 1: Select the *chart* option in the '*Display as*' tab

Step 2: Select *Identified as* → *Female* under the '*Comparison 1*' tab

Step 3: Select *Identified as* → *Male* under the '*Comparison 2*' tab

Step 4: Click on the '*Apply*' button